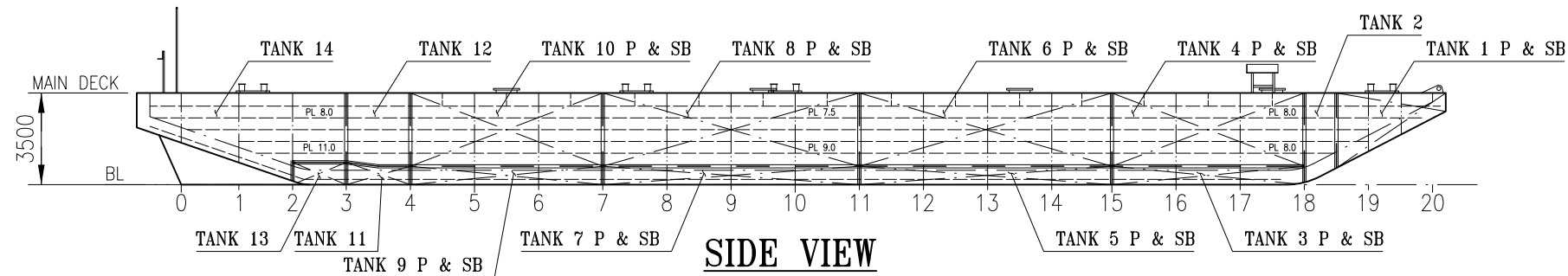
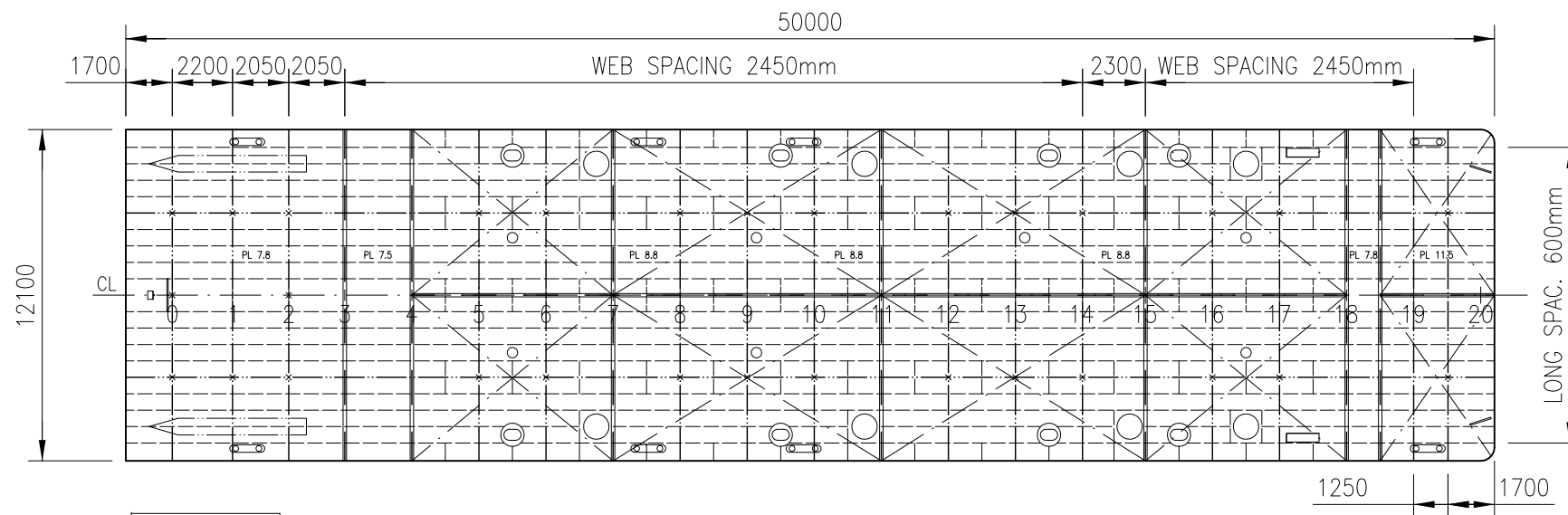


SECTION



SIDE VIEW



MAIN DECK

x PILLARS
VKR150x150

MAIN DIMENSIONS:

LENGTH OVER ALL 50,00 m
BREADTH MOULDED 12,10 m
DEPTH MOULDED 3,5 m
GROSS 540 GT
NET 162 NT

"KANALIA"
CALL SIGN: SKYH

Sandinge Bogsering & Sjötransport
SE-453 92 Lysekil Sweden
Tel. +46 (0)523 66 07 45
Fax. +46 (0)523 66 07 22
E-mail: info@sandinge.com
Web: www.sandinge.com

ISSUE	DESCRIPTION	DATE	DRWN	DATE	CHKD
B	LOADING SCALE ADDED	OCT.2009	OLA		
C	POINT LOADS BHD & WEB CORRECTED	APR.13	SJ		

PERMISSIBLE LOADS

LOAD CASE	MAX. PERM. LOAD	DIM. PART
ANYWHERE ON DECK #1-#4, #18-#20	4.5 TONNES /m2	PLATE THICKN.
ANYWHERE ON DECK #4-#18	5.4 TONNES /m2	LONGITUDINALS
EVEN DISTRIBUTION: TRV. WEB	13.3 TONNES /m.	BENDING, WEB
EVEN DISTRIBUTION: BHD.	72.9 TONNES /m.	WELD
POINT LOAD: ON DECK BTW #4-#18	3.0 TONNES **	PLATE THICKN.
POINT LOAD: ELSEWHERE ON DECK	2.5 TONNES **	PLATE THICKN.
POINT LOAD: ANYWHERE ON WEB	25.0 TONNES **	BENDING
POINT LOAD: ANYWHERE ON BULKHEAD	21.9 TONNES **	WELD
POINT LOAD: BULKHEAD/ WEB	48.1 TONNES **	WELD/PL. TH.
POINT LOAD: BULKHEAD/ BULKHEAD	43.7 TONNES **	PLATE THICKN.

** = ASSUMED PRINT: 300x300mm.
EVERY OTHER LOADCASE
TO BE CONSIDERED SPECIALLY.

DRAUGHT IN METRES TO B.L.	LOADING SCALE - KANALIA					
	KMT IN METRES AB. B.L.	FREE-BOARD IN METRES	DEADWIGHT IN TONNES AT 1000 KG IN FRESH WATER ρ=1,000	IN BRACKISH WATER ρ=1,025	IN SALT WATER ρ=1,025	
3,25		0,2				
3,0	6,1	0,4	1311		1311	
2,75	6,3	0,8	1200		1200	
2,50	6,7	1,0	1100		1100	
2,25	7,2	1,2	1000		1000	
2,0	7,8	1,4	900		900	
1,75	8,5	1,6	800		800	
1,50	9,5	1,8	700		700	
1,25	11,1	2,0	600		600	
1,0	13,5	2,2	500		500	
0,75	17,3	2,4	400		400	
0,50	25,4	2,6	300		300	
		2,8	200		200	
		3,0	100		100	
			0		0	

Summer draught 2,908 m

LIGHT SHIP WEIGHT 318MT

CAPACITIES OF WATER BALLAST TANKS					
TANK No.	VOLUME m3	LCG fr. L/2 m	VCG fr. BL m	TCG fr. CL m	MOM. OF INERT. m4
14	229.7 m3	-20.58	2.24	0.0	1181.0
13	20.0 m3	-18.01	0.44	0.0	302.6
12	80.7 m3	-15.76	2.12	0.0	361.7
11	21.2 m3	-15.82	0.37	0.0	361.7
10 P & SB	122.6 m3 EACH	-10.88	2.10	± 3.02	135.6
9 P & SB	30.1 m3 EACH	-10.88	0.35	± 2.98	135.6
8 P & SB	163.5 m3 EACH	-2.30	2.10	± 3.02	180.8
7 P & SB	40.2 m3 EACH	-2.30	0.35	± 2.98	180.8
6 P & SB	161.0 m3 EACH	7.43	2.10	± 3.02	178.0
5 P & SB	39.6 m3 EACH	7.43	0.35	± 2.98	178.0
4 P & SB	122.6 m3 EACH	15.92	2.10	± 3.02	135.6
3 P & SB	30.0 m3 EACH	15.91	0.36	± 2.98	135.6
2	46.2 m3	20.19	1.91	0.00	180.8
1 P & 1 SB	44.0 m3 EACH	22.49	2.50	± 3.00	77.0

YARD:	DATE: 2005-07-11	DATE: 2005-09-05	SCALE: 1:250 (A3)
	DRAWN: MKn/ MHO	CHECKED: PH	
TITLE: KANALIA CAPACITY PLAN			
DWG NO. 05137-152-01	SHEET: 1	NO. OF SHEETS: 1	ISSUE: C