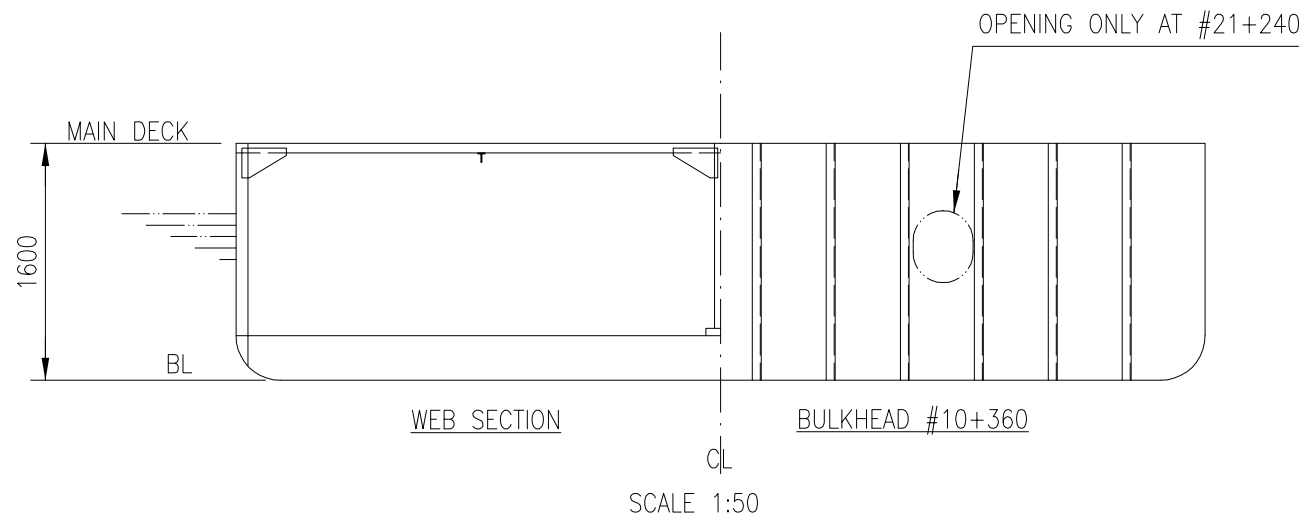
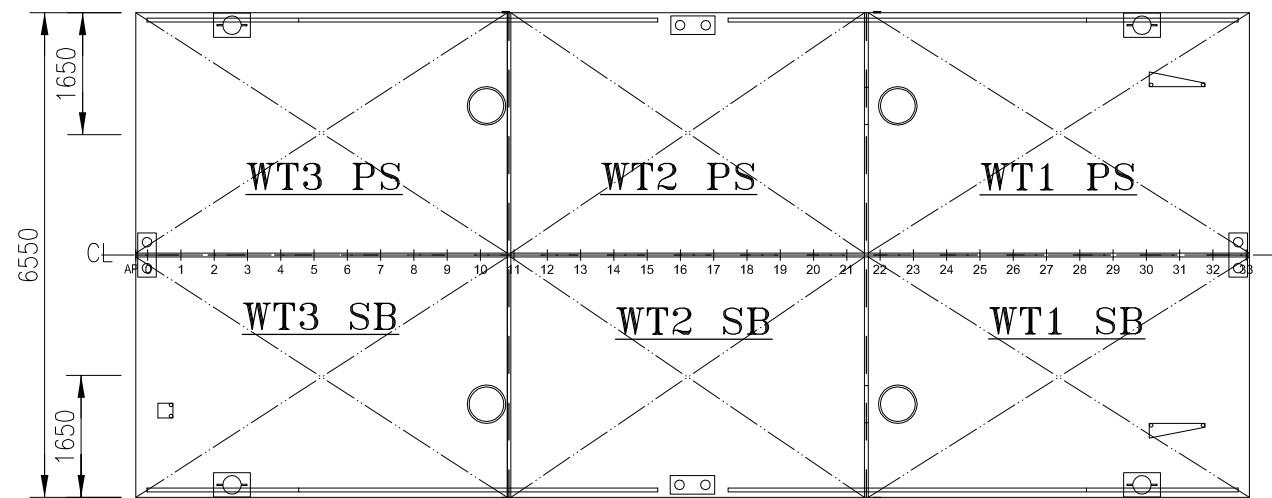
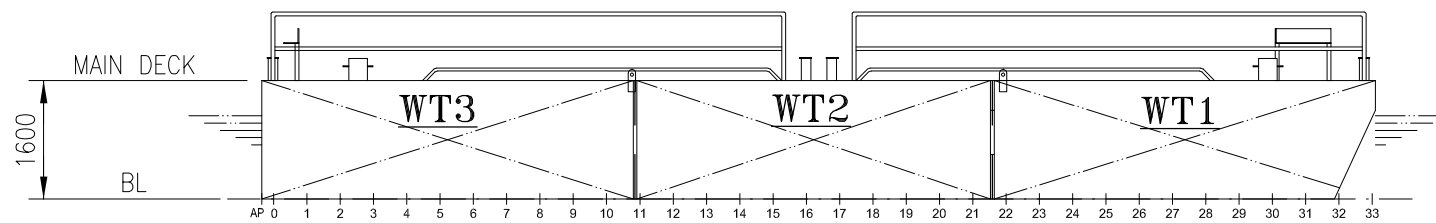


ISSUE	DESCRIPTION	DATE	DRWN	DATE	CHKD
A	LOADING SCALE ADDED	OCT.2009	OLA		



TANK No	VOL. (m ³)	LCG fr. L/2 (m)	VCG fr. BL. (m)	TCG fr. CL. (m)	MOM. OF IN. (m ⁴)
WT1 SB	26.1	4.84	0.82	1.63	15.2
WT1 P	26.1	4.84	0.82	-1.63	15.2
WT2 SB	25.1	-0.09	0.80	1.63	14.1
WT2 P	25.1	-0.09	0.80	-1.63	14.1
WT3 SB	26.1	-5.02	0.80	1.63	14.7
WT3 P	26.1	-5.02	0.80	-1.63	14.7

PERMISSIBLE LOADS		
LOAD CASE	MAX. PERM. LOAD	DIM. FACTOR
ANYWHERE ON DECK	3.5 tonnes / m ²	FRAMES
EVEN DISTRIBUTION: LONG BHD.	11.7 tonnes / m	BHD. BUCKLING
EVEN DISTRIBUTION: TRANSV. BHD	11.7 tonnes / m	BHD. BUCKLING
POINT LOAD: ANYWHERE ON DECK	0.70 tonnes **	FRAMES
POINT LOAD: ON FRAMES	0.70 tonnes **	FRAMES
POINT LOAD: ON LONG. BULKHEAD	10.3 tonnes **	BHD. BUCKLING
POINT LOAD: ON TRANSV. BULKHEAD	10.3 tonnes **	BHD. BUCKLING
POINT LOAD: BULKHEAD / BULKHEAD	35.5 tonnes **	WELD TO DECK

** = ASSUMED PRINT: 300x300mm.
EVERY OTHER LOADCASE TO BE CONSIDERED SPECIALLY

DRAUGHT IN METRES TO B.L.	KM ³ IN METRES ABOVE B.L.	FREE-BOARD IN METRES	DEADWEIGHT IN TONNES A' 1000 KG		
			IN FRESH WATER ρ=1,000	IN BRACKISH WATER ρ=1,010	IN SALT WATER ρ=1,025
1.4	3.3	0.2			
1.2	3.6	0.4	77		77
1.0	4.1	0.6	60		60
0.8	4.9	0.8	40		40
0.6	6.3	1.0	30		30
0.4	9.3	1.2	20		20
0.2	18.2	1.4	10		10
0.0			0		0

Summer draught 1,143 m
Sea area D 0,467 m
LIGHT SHIP WEIGHT 39 MT

"LUKAS"
CALL SIGN: SHYV

MAIN DIMENSIONS:
 LENGTH O.A. 15,05 m.
 BREADTH O.A. 6,55 m
 DEPTH 1,6 m
 DRAUGHT AT SUMMER FREEB. 1,14 m
 DEADWEIGHT 77 TONNES

 PRÅMKOMPANIET AB Bogsering - Pråmuthyrning - Isbrytning Skal Hedarna 166 SE-453 92 Lysekil Sweden Tel. +46 (0)523 66 07 45 Fax. +46 (0)523 66 07 22	YARD:	DATE: 2007-02-22	DATE: 2007-02-22	SCALE: 1:100 (A3)
		DRAWN: FR/JBN	CHECKED: PH	
TITLE: LUKAS CAPACITY PLAN				
DWG NO. 07229-1-152-01	SHEET: 1	NO. OF SHEETS: 1	ISSUE: A	