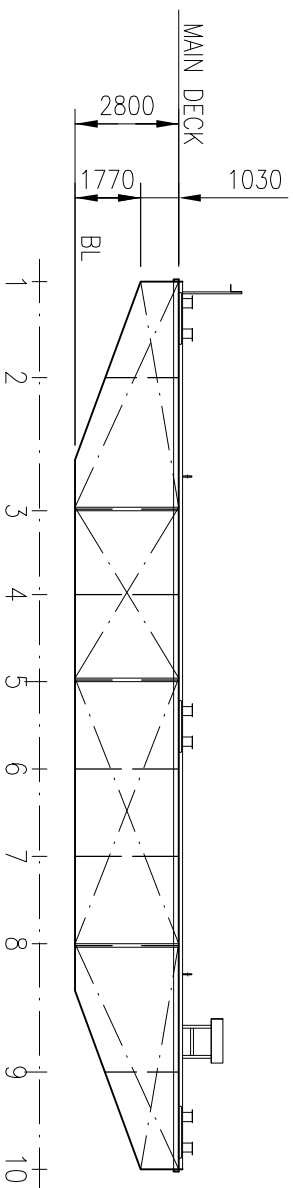
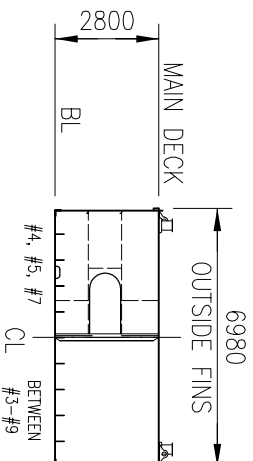


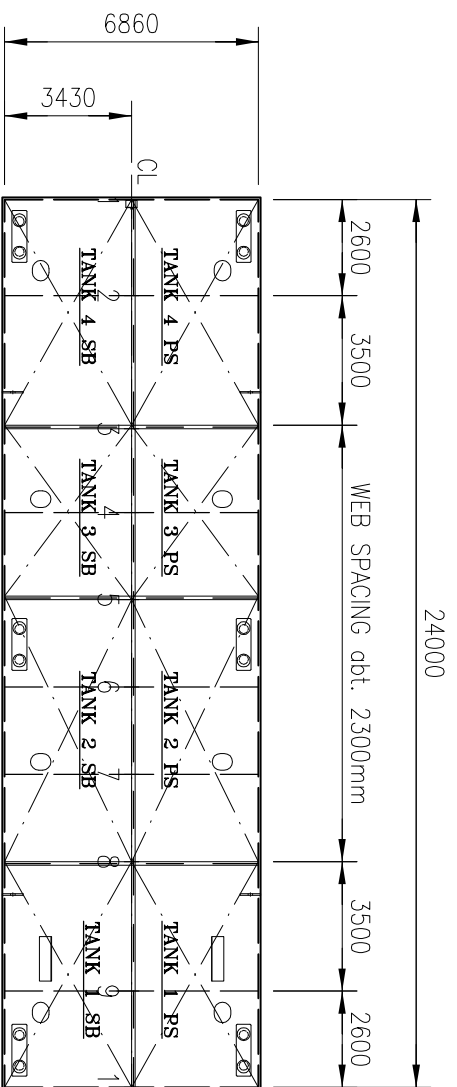
**\*\* = ASSUMED PRINT: 300x300mm.**  
**EVERY OTHER LOADCASE TO BE CONSIDERED SPECIALLY.**



**SIDE VIEW**



**SECTION**



**MAIN DECK**

**MAIN DIMENSIONS:**  
 LENGTH OVER ALL 24,00 m  
 BREADTH MOULDED 6,86 m  
 DEPTH MOULDED 2,80 m  
 GROSS 122 GT  
 NET 122 NT

**“OLE”**

**CALL SIGN: SLBU**

**CAPACITIES OF TANKS**

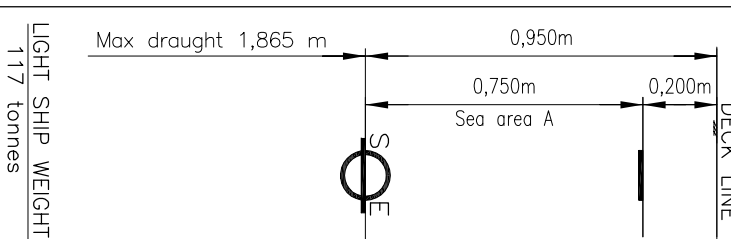
TANK No.	VOLUME m <sup>3</sup>	LCC fr. L/2 m	VCG fr. BL m	TCG fr. CL m	MOM. OF INERT. m <sup>4</sup>
1 PS VOID	43.3	8.47	1.67	-1.72	20.5
1 SB VOID	43.3	8.47	1.67	+1.72	20.5
2 PS W.B.	67.0	2.36	1.40	-1.72	23.8
2 SB W.B.	67.0	2.36	1.40	+1.72	23.8
3 PS W.B.	44.6	-3.54	1.40	-1.72	15.9
3 SB W.B.	44.6	-3.54	1.40	+1.72	15.9
4 PS VOID	43.3	-8.47	1.67	-1.72	20.5
4 SB VOID	43.3	-8.47	1.67	+1.72	20.5

**PERMISSIBLE LOADS**

LOAD CASE	MAX. PERM. LOAD	DIM. PART
ANYWHERE ON DECK #3-#8	1.4 TONNES /m <sup>2</sup>	Plate thickness
ANYWHERE ON DECK #1-#3, #8-#10	4.0 TONNES /m <sup>2</sup>	Plate thickness
EVEN DISTRIBUTION: TRV. WEB	26.6 TONNES /m.	Buckling
EVEN DISTRIBUTION: BHD.	26.6 TONNES /m.	Buckling
POINT LOAD: ANYWHERE ON DECK #3-#8	6.0 TONNES **	Plate thickness
POINT LOAD: D : 0 , #1-#3,#8-#10	17.5 TONNES **	Weld
POINT LOAD: ANYWHERE ON WEB	17.5 TONNES **	Weld
POINT LOAD: ANYWHERE ON BULKHEAD	17.5 TONNES **	Weld
POINT LOAD: BULKHEAD/ WEB	46.7 TONNES **	Weld
POINT LOAD: BULKHEAD/ BULKHEAD	46.7 TONNES **	Weld

**LOADING SCALE — OLE**

DRAUGHT IN METRES ABOVE UNDERSIDE KEEL PLATE	KMT IN METRES ABOVE UNDERSIDE KEEL PLATE	DEADWEIGHT IN TONNES A' 1000 KG		FREE-BOARD IN METRES
		IN FRESH WATER	IN SALT WATER	
2.5	250	250	250	0.5
2.0	3.46	142	150	
1.5	3.91	130	142	1.0
1.0	4.87	120	130	
		110	120	1.5
		100	110	
		90	100	2.0
		80	90	
		70	80	2.5
		60	70	
		50	60	3.0
		40	50	
		30	40	3.5
		20	30	
		10	20	4.0
		0	10	
			0	4.5
				5.0
				5.5
				6.0
				6.5
				7.0
				7.5
				8.0
				8.5
				9.0
				9.5
				10.0
				10.5
				11.0
				11.5
				12.0
				12.5
				13.0
				13.5
				14.0
				14.5
				15.0
				15.5
				16.0
				16.5
				17.0
				17.5
				18.0
				18.5
				19.0
				19.5
				20.0
				20.5
				21.0
				21.5
				22.0
				22.5
				23.0
				23.5
				24.0
				24.5
				25.0



3 LOADING SCALE ADDED



**PRÄMKOMPANIET AB**  
 Bogsering - Prämthyrning - Isbrytning

Skal Hedarna 166 Tel. +46 (0)523 66 07 45  
 SE-453 92 Lysekil Fax. +46 (0)523 66 07 22  
 Sweden

YARD:	DATE:	DATE:	SCALE:
3	2005-07-11	2006-03-22	OCT.2009
TKI/MHO	CHECKED: PH		OIA

**OLE**

**CAPACITY PLAN**

**1:200 (A3)**

DWG NO.	SHEET:	NO. OF SHEETS:	ISSUE:
05138-152-01	1	1	3